



FIVE-YEAR OVERVIEW

1 April 2000 to 31 March 2005

Key

CPE1	Capital Gains Tax (10/2001)
CPE2	Labour Legislation & Tax Update (2/2002)
CPE3	Professional Conduct (7/2002)
CPE4	Money Laundering (11/2002)
CPE5	2003 Budget & Tax Update (3/2003)
CPE6	Legislation Update (9/2003)
CPE7	FAIS (11/2003)
CPE8	2004 Budget & Tax Update (3/2004)
CPE10	The Business Imperative of BEE and the Charters (6/2004)
CPE11	Labour Legislation Update (8/2004)
CPE12	2005 Budget & Tax Update (3/2005)
CPEL1	Business Communication Skills (7/2003)
CPEL2	Conflict Management (2/2004)
CPEL3	Leadership & Management (7/2004)
Y1	Year 1 : (1 April 2000 to 31 March 2001)
Y2	Year 2 : (1 April 2001 to 31 March 2002)
Y3	Year 3 : (1 April 2002 to 31 March 2003)
Y4	Year 4 : (1 April 2003 to 31 March 2004)
Y5	Year 5 : (1 April 2004 to 31 March 2005)
D	Disabled
F	Female
M	Male
GP	Grants Paid
LR	Levies Received
EUPEC	Education Upliftment Project - Eastern Cape
EUPLIM	Education Upliftment Project - Limpopo
PDI	Previously Disadvantaged Individual
SAICA	South African Institute of Chartered Accountants
SIC	Standard Industrial Classification

Learnerships

Figure L1 : Total Learners Registered (Cumulative)

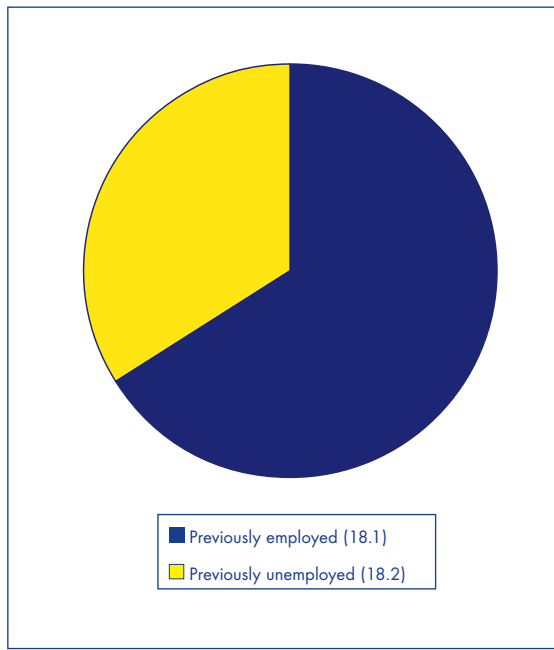


Figure L2 : Completed vs Currently Registered Learners

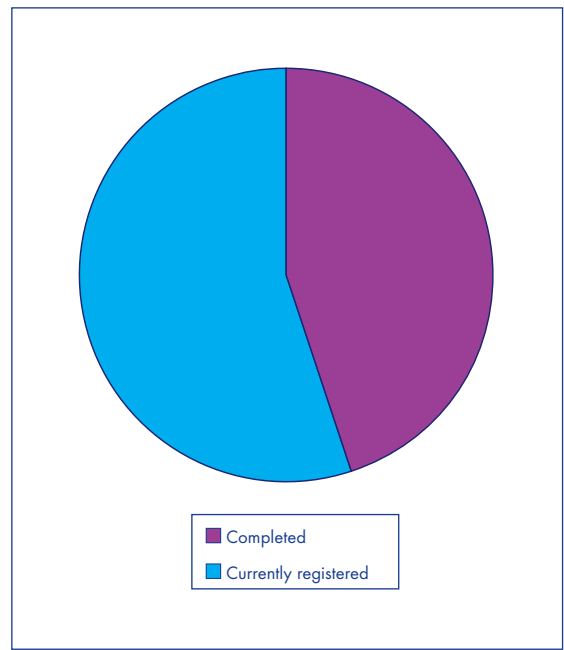


Figure L3 : Demographic Breakdown : Learners Registered

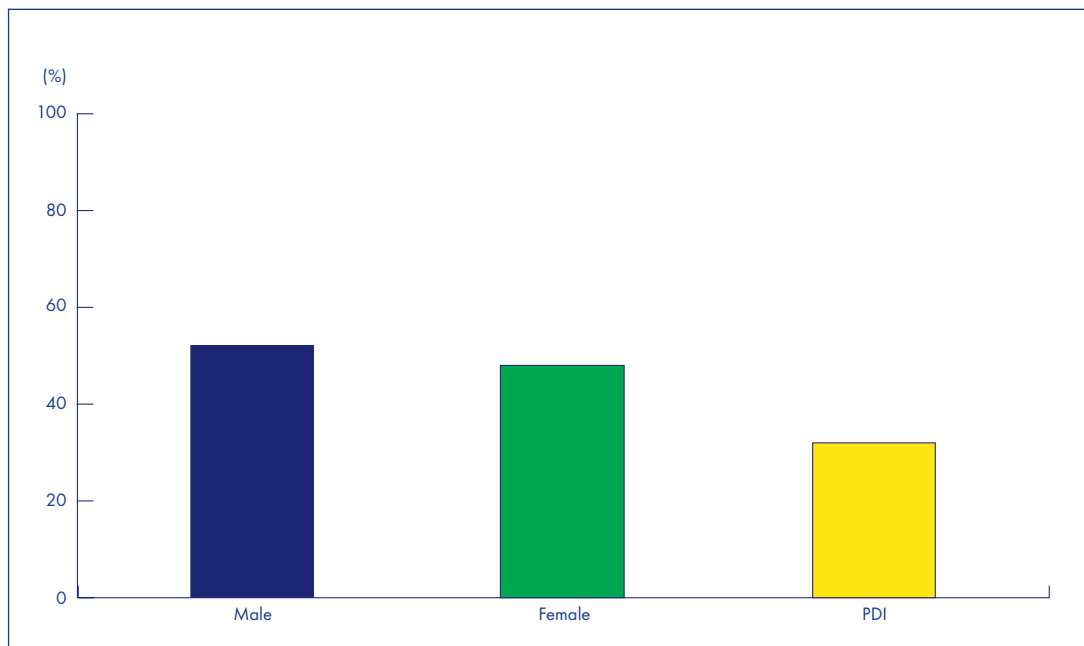


Figure L4 : PDI Learnership Grant Applications Approved

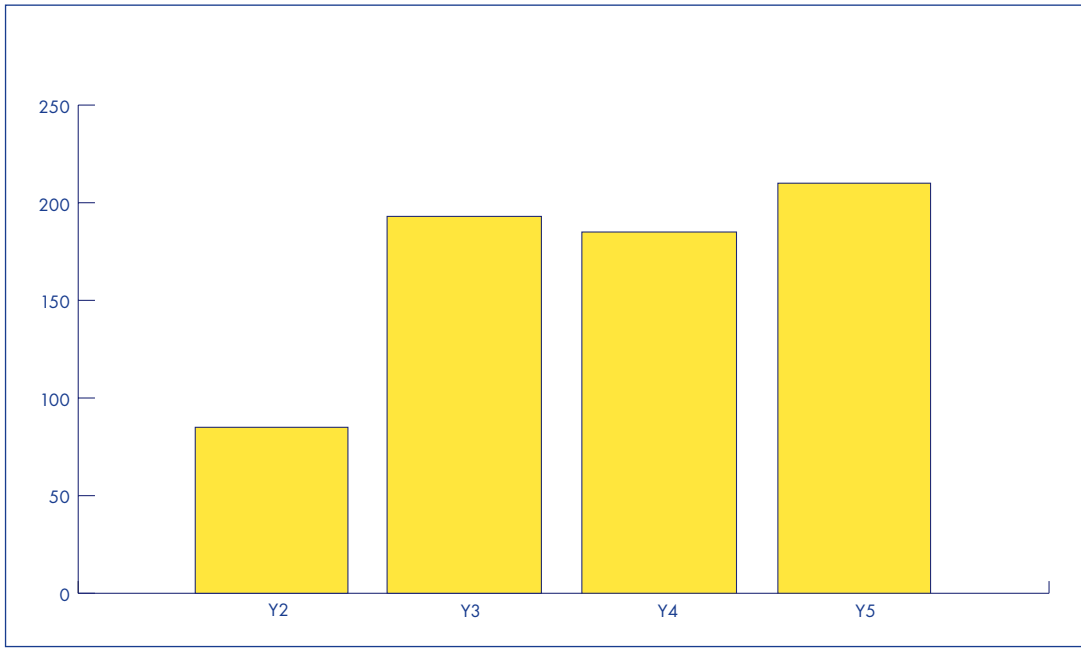
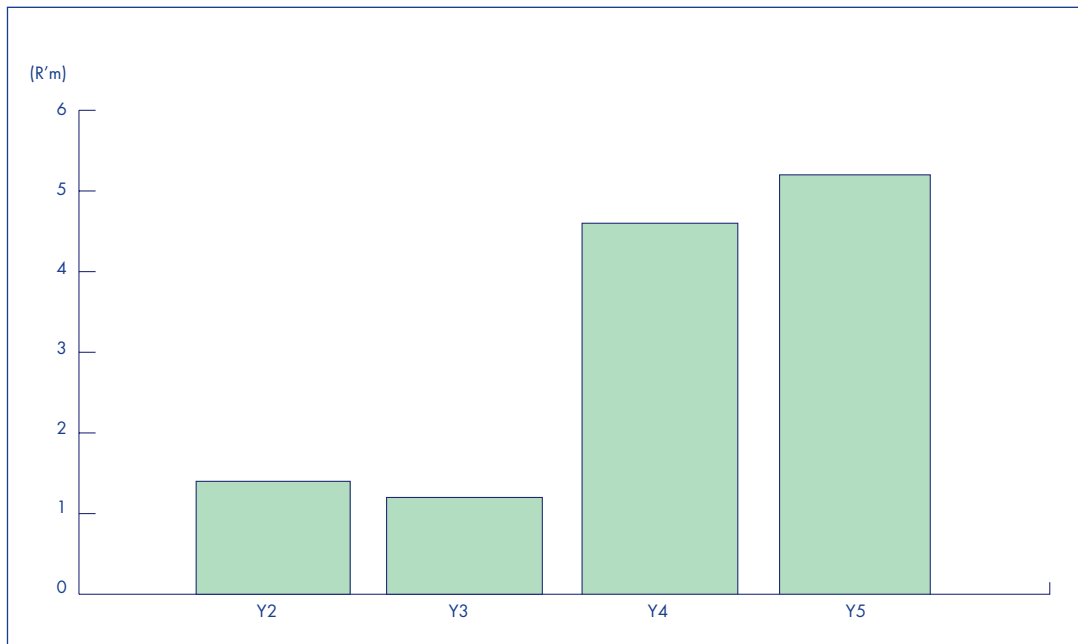


Figure L5 : PDI Learnership Grant Paid to Members



Quality Assurance

Figure QA1 : Workplace Assessors

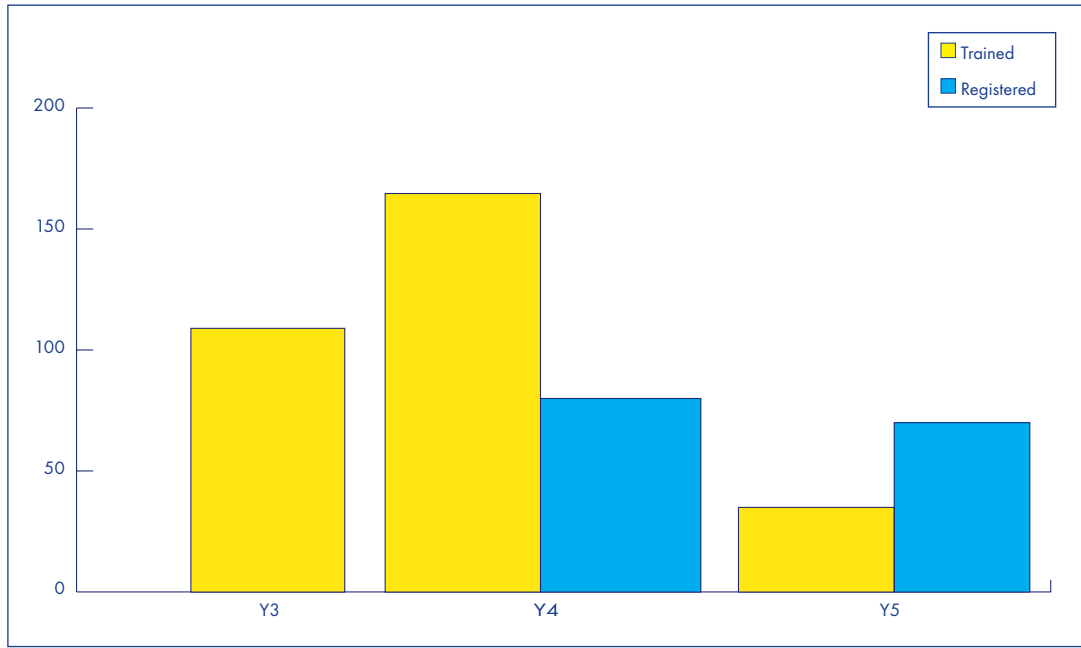
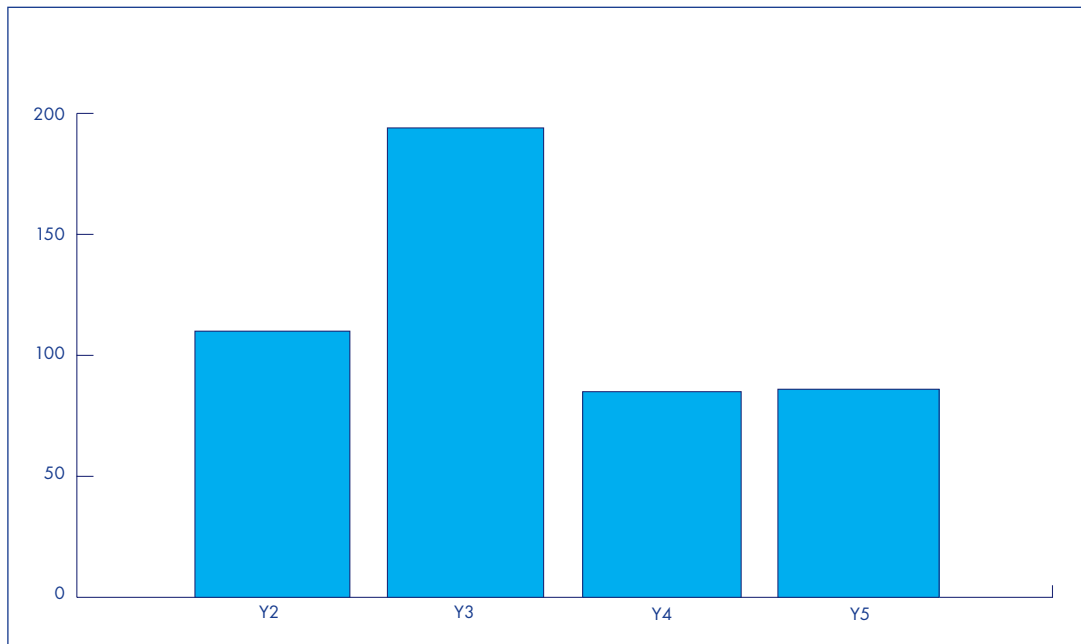


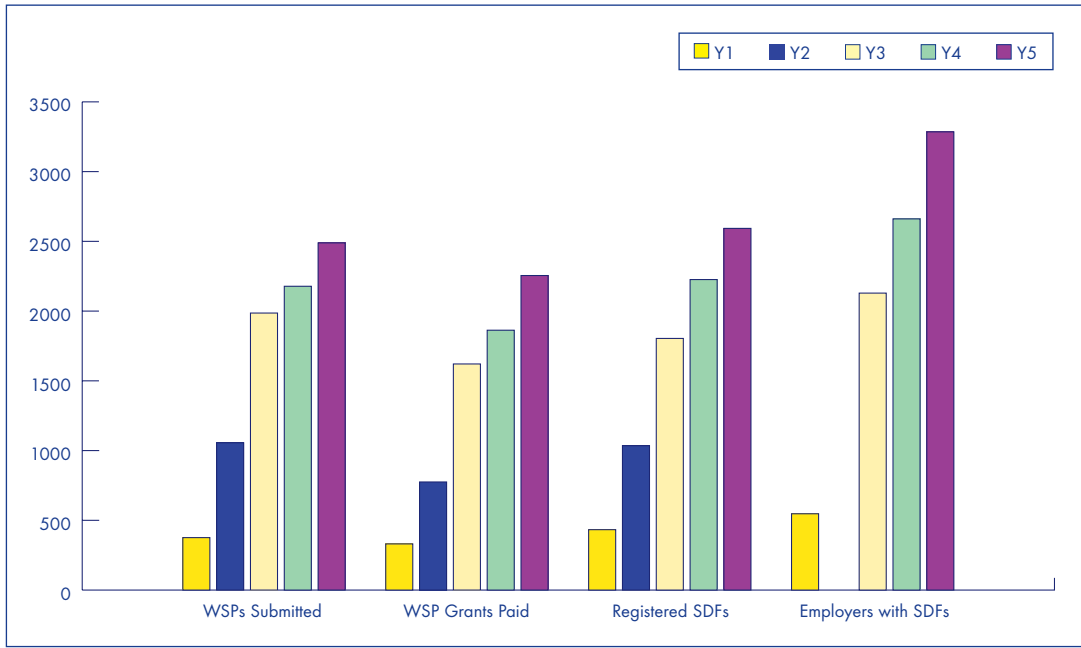
Figure QA2 : Workplace Providers



Note : Based on an MoU with SAICA, an additional 800 workplace providers have been accredited by SAICA

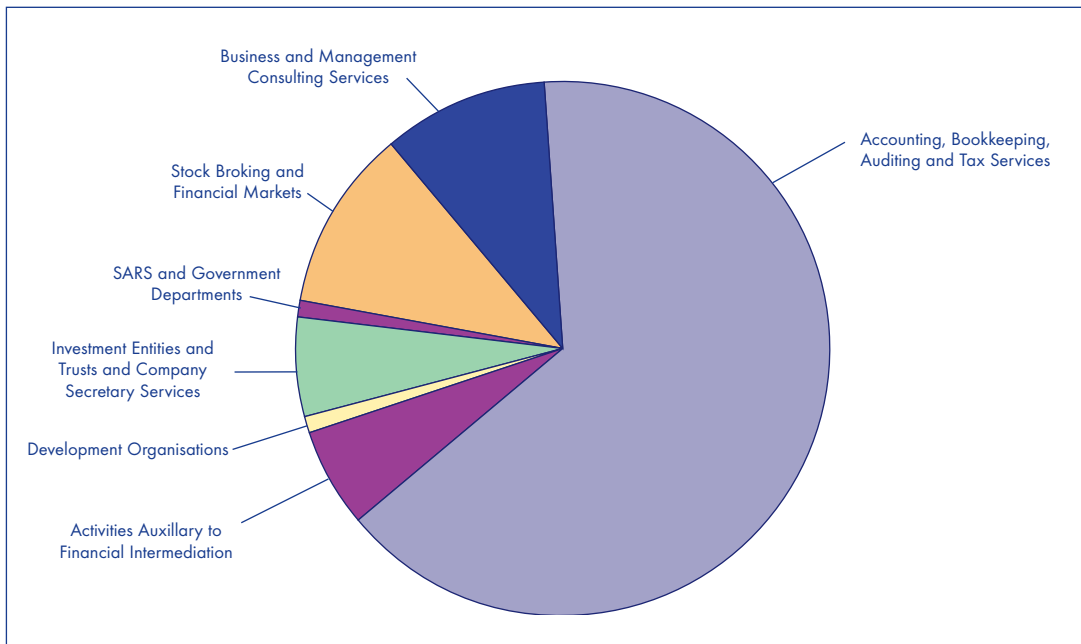
Skills Planning

Figure SP1 : Participation by Levy Paying Members



Note : Statistics for Employers with SDFs were not recorded in Y2

Figure SP2 : Employee Profile by SIC Code



Note : Statistics provided in Employee Profile graphs represent participating employers in the sector only (to 5/2005), ie those who submit annual Workplace Skills Plans, and not the entire sector

Figure SP3 : Employee Profile by Organisation Size

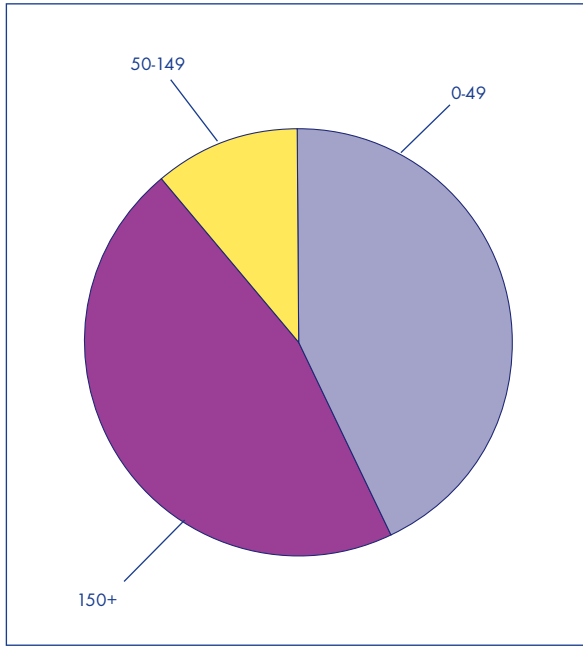


Figure SP4 : Employee Profile by Province

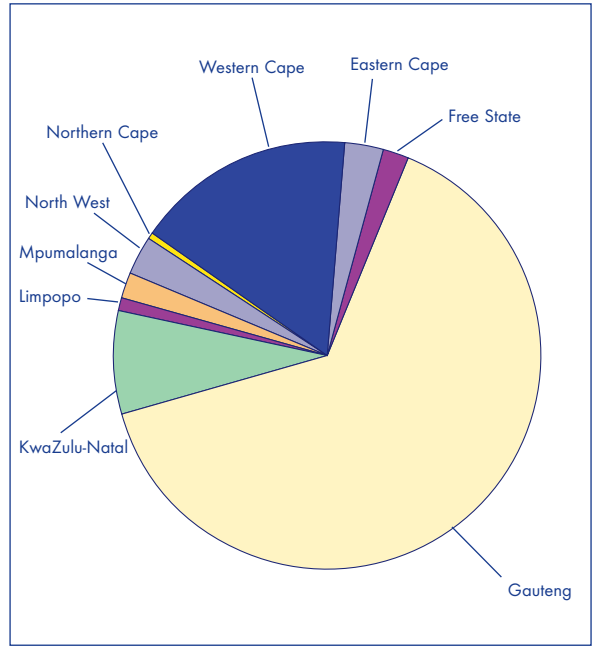


Figure SP5 : Employee Profile by Occupational Category

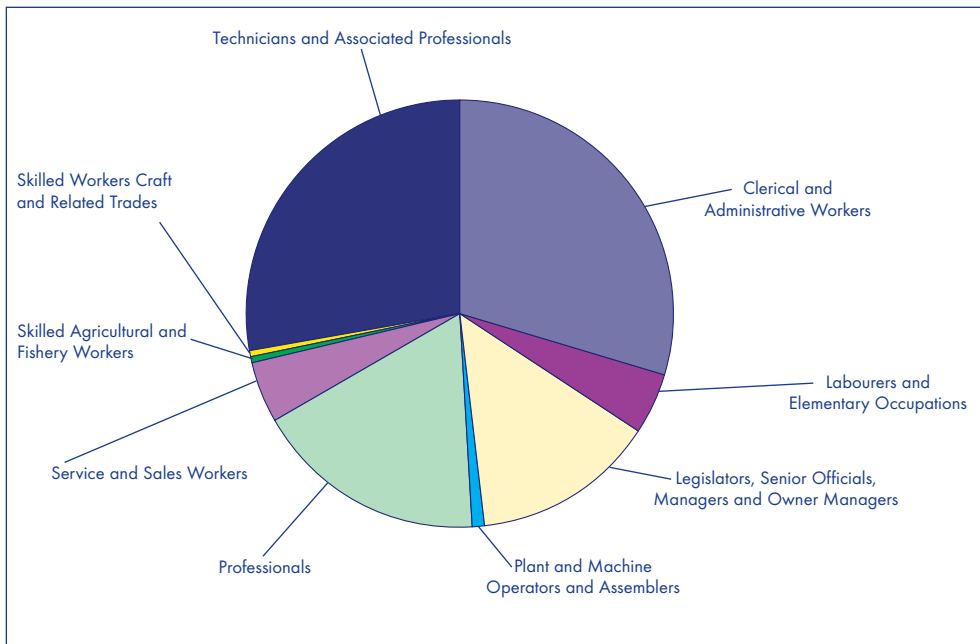


Figure SP6 : Occupational Category by Population Group (as at 5/2005)

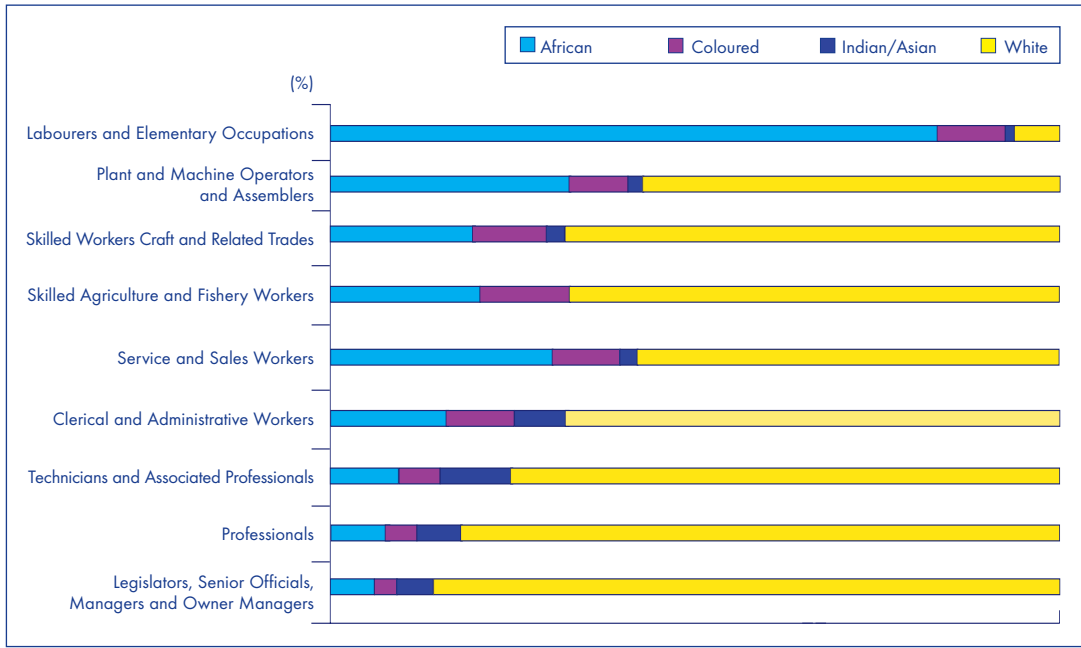


Figure SP7 : Levies Received and Grants Paid by SIC Code (as at 5/2005)

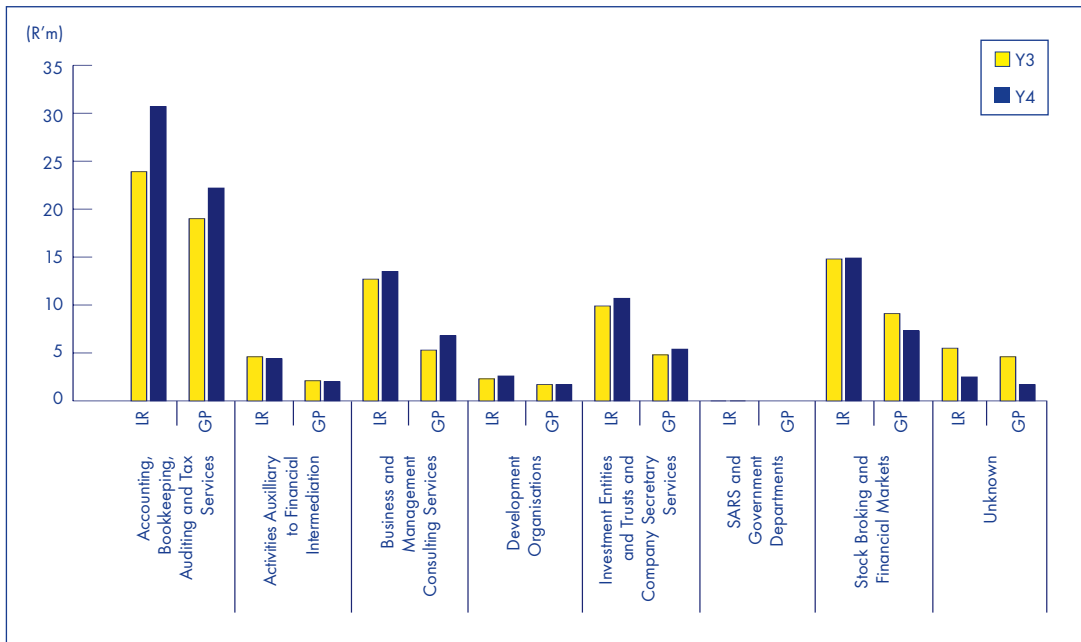
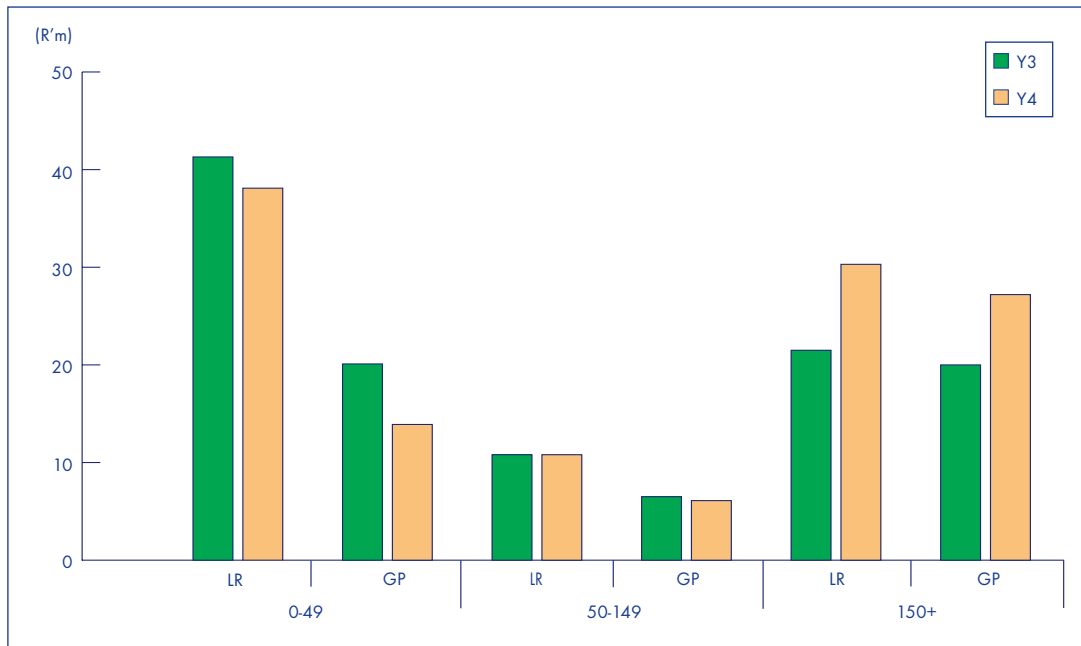
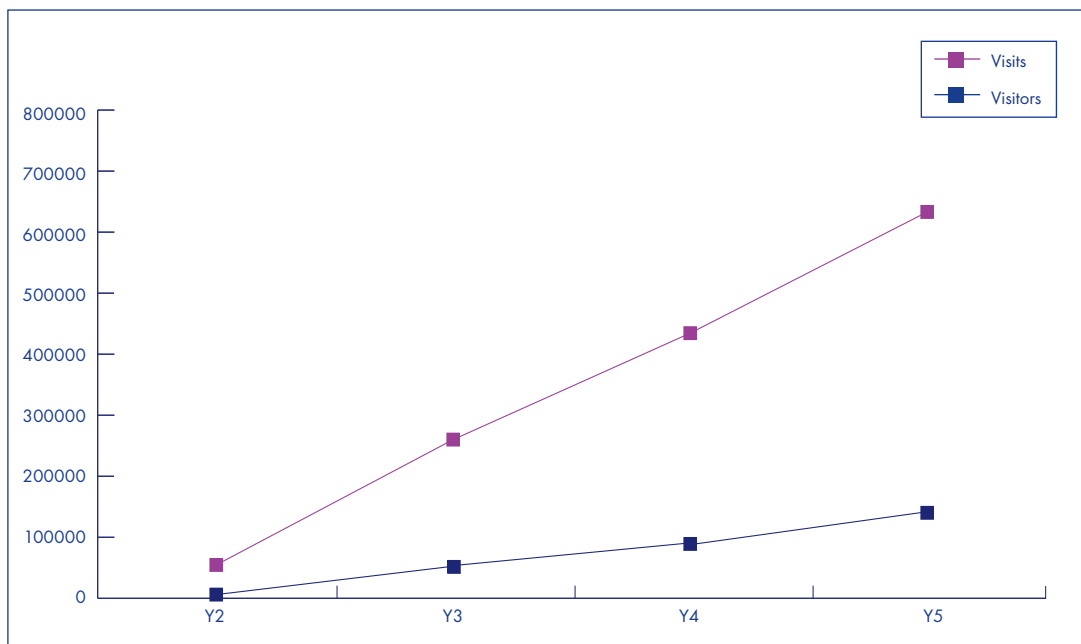


Figure SP8 : Levies Received and Grants Paid by Organisation Size (as at 5/2005)



Marketing Communication

Figure M1 : Website Activity



Note : Measurement commenced final quarter Y2

Figure M2 : Call Centre Activity

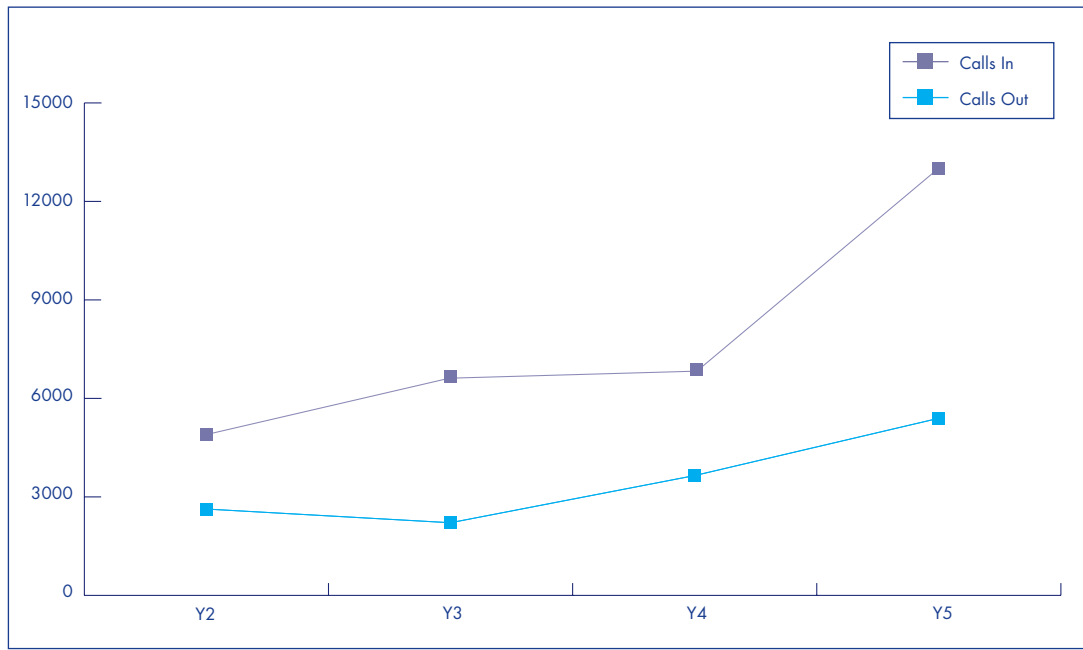
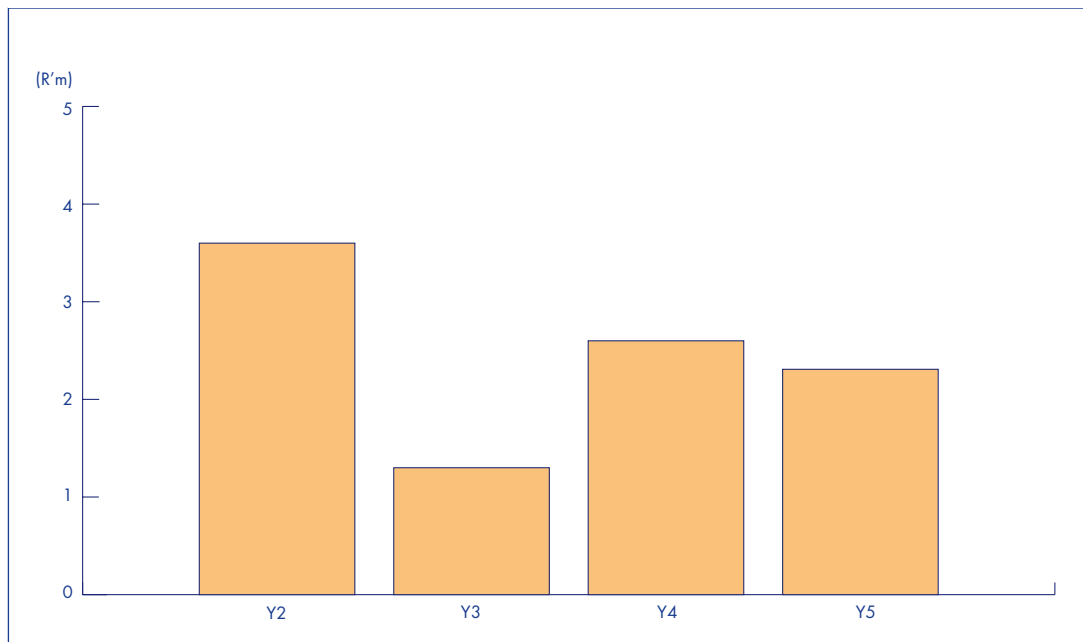


Figure M3 : Estimated Value of Media Publicity Obtained



(Calculation : Advertising rate x 3 for positive publicity and x -3 for negative publicity)

Figure M4 : Attendance per CPE Roadshow

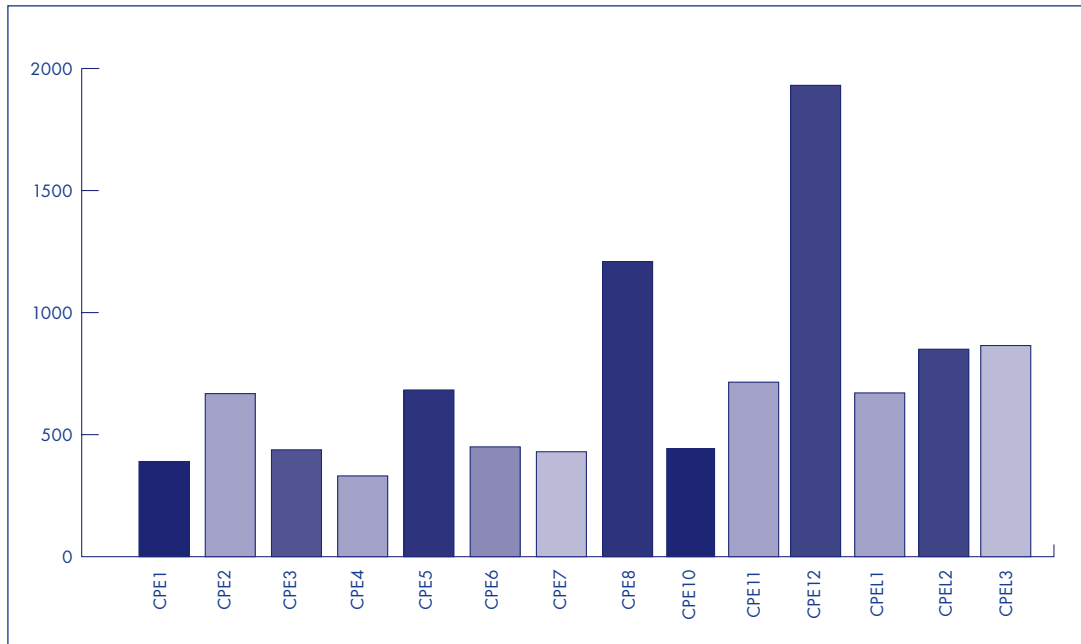


Figure M5 : Attendance per Annual CPE Project

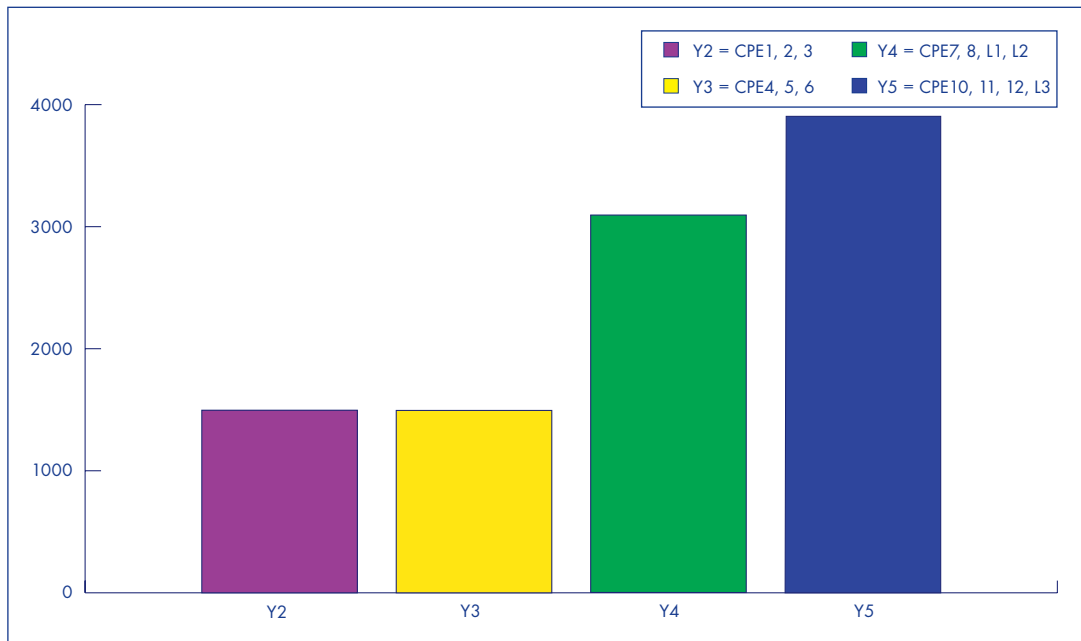


Figure M6 : Total CPE Attendance per Venue

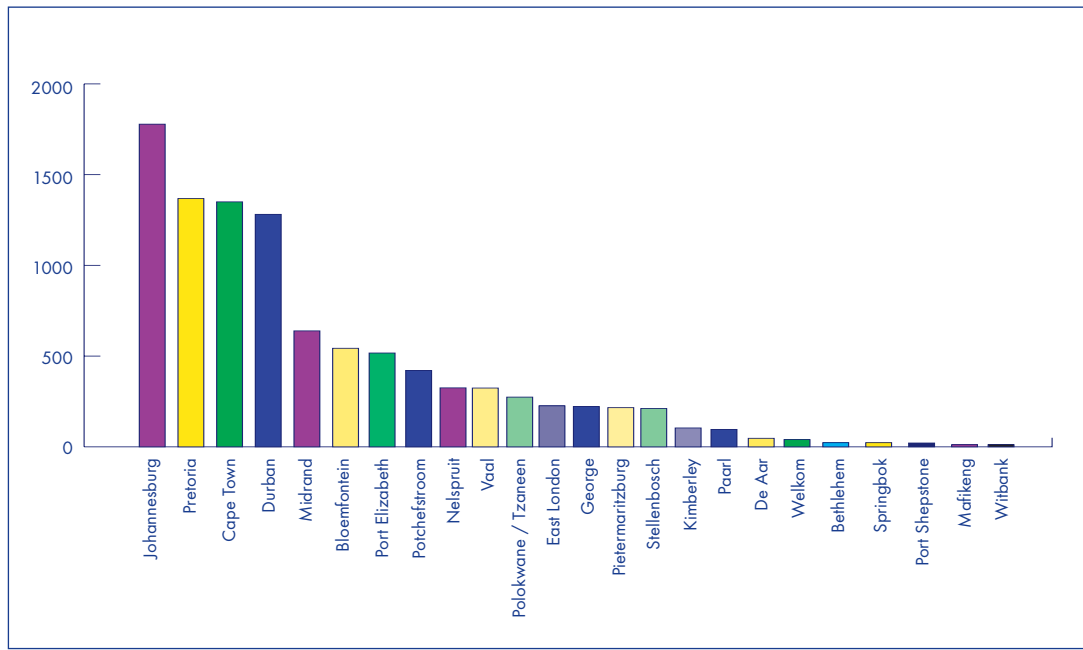
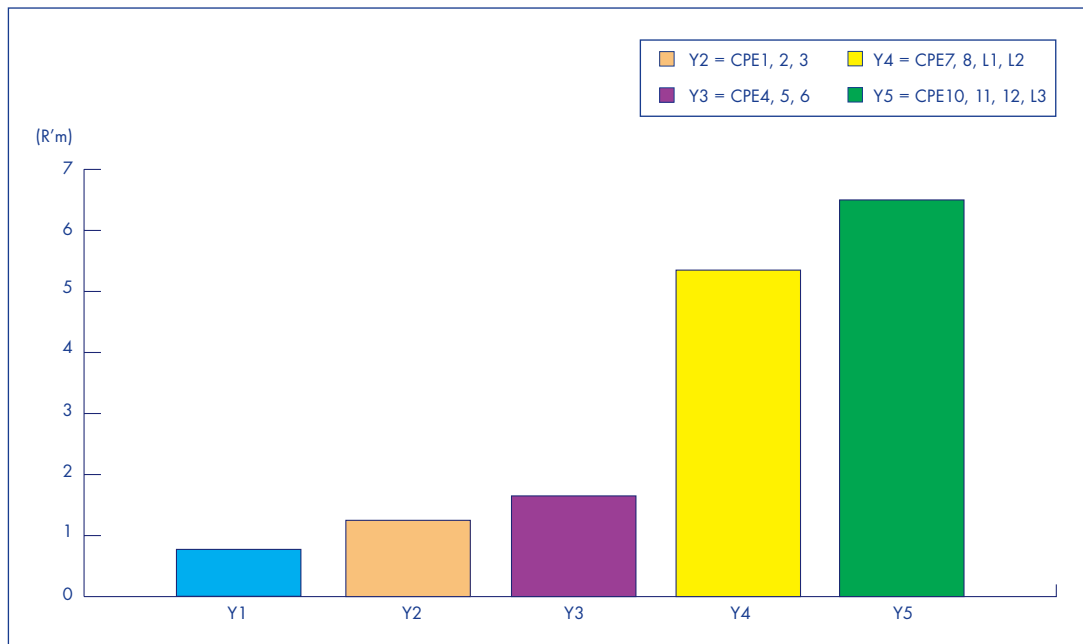


Figure M7 : Budget per Annual CPE Project



Social Development Projects

Figure SDP1 : Social Development Projects (as at 3/2005)

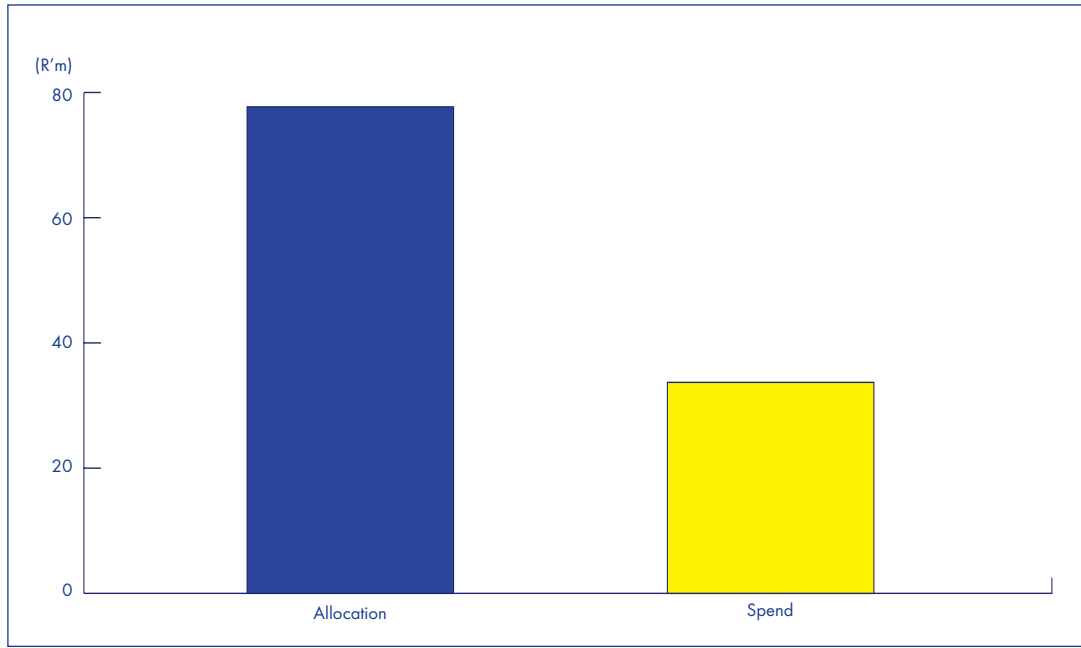


Figure SDP2 : Social Development Project Funding

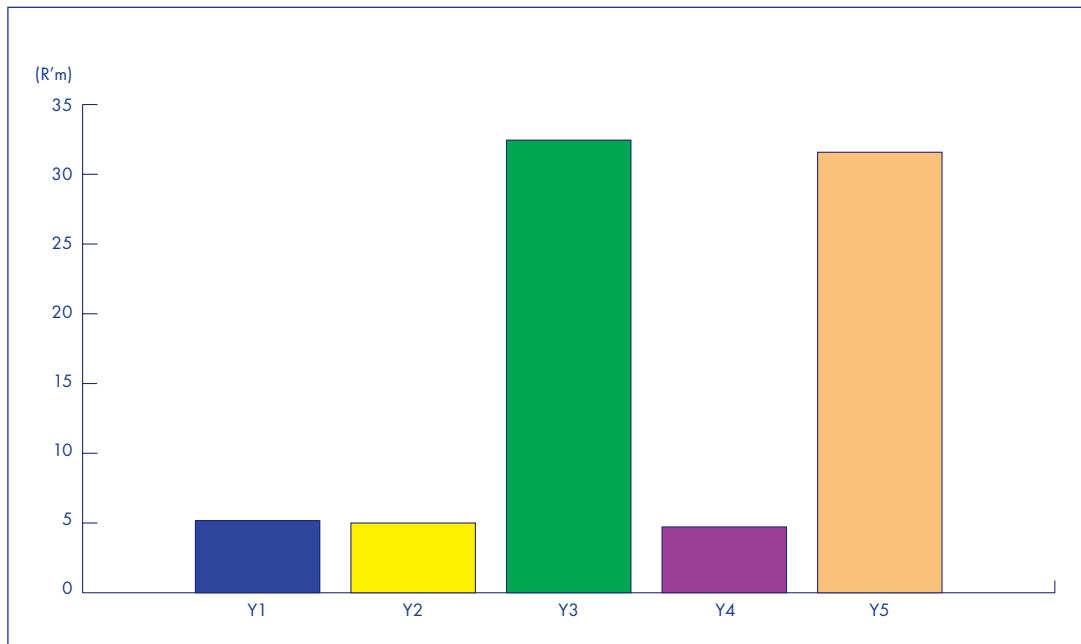


Figure SDP3 : Social Development Projects Funded

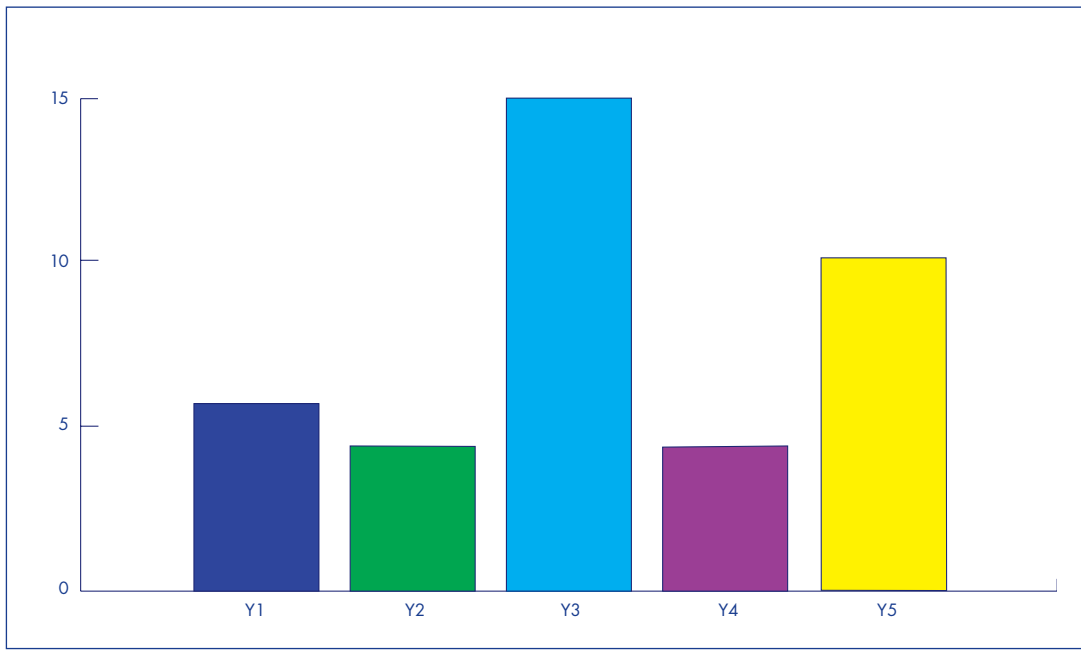


Figure SDP4 : Social Development Project Beneficiaries

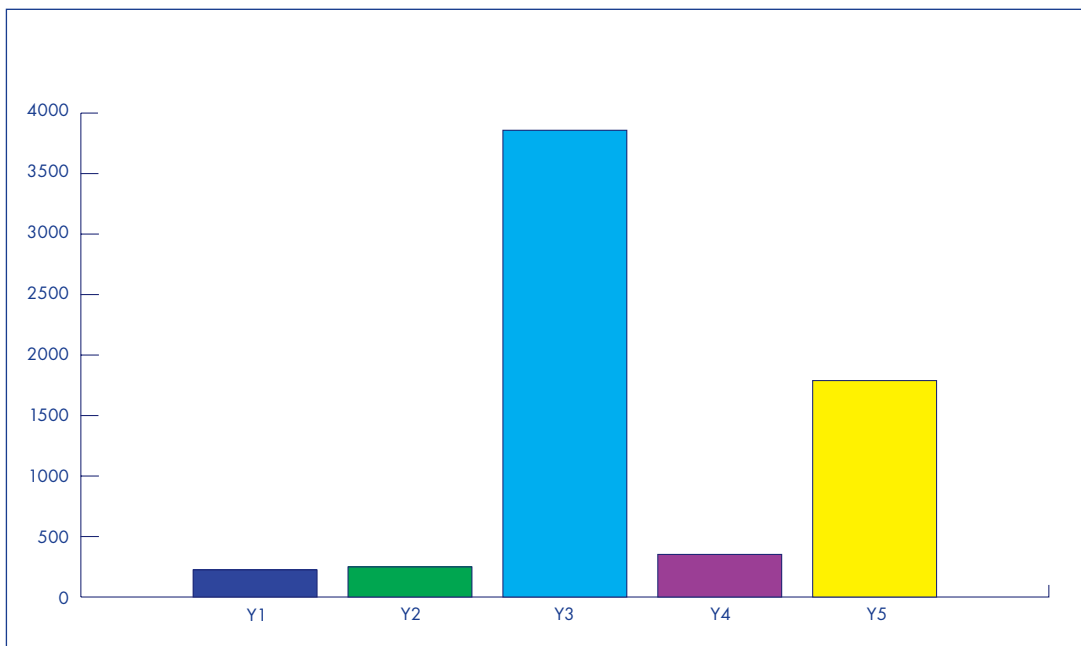


Figure SDP5 : Social Development Project Beneficiaries

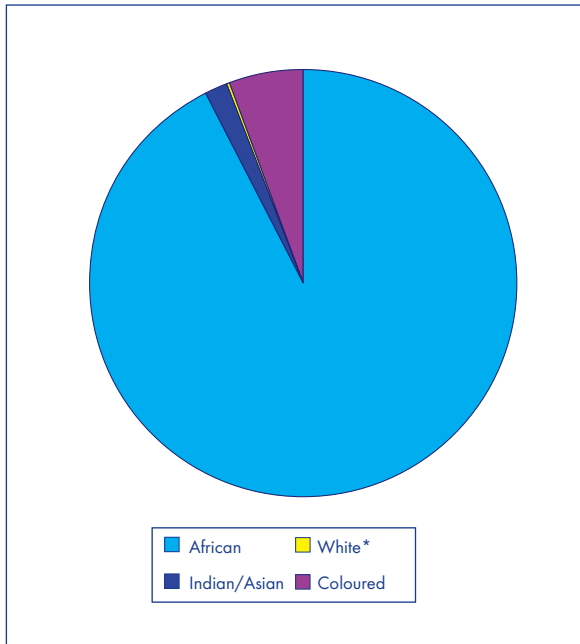
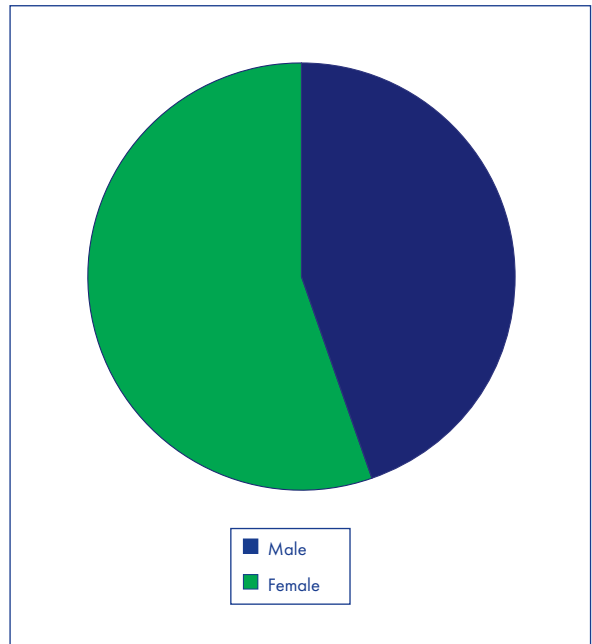


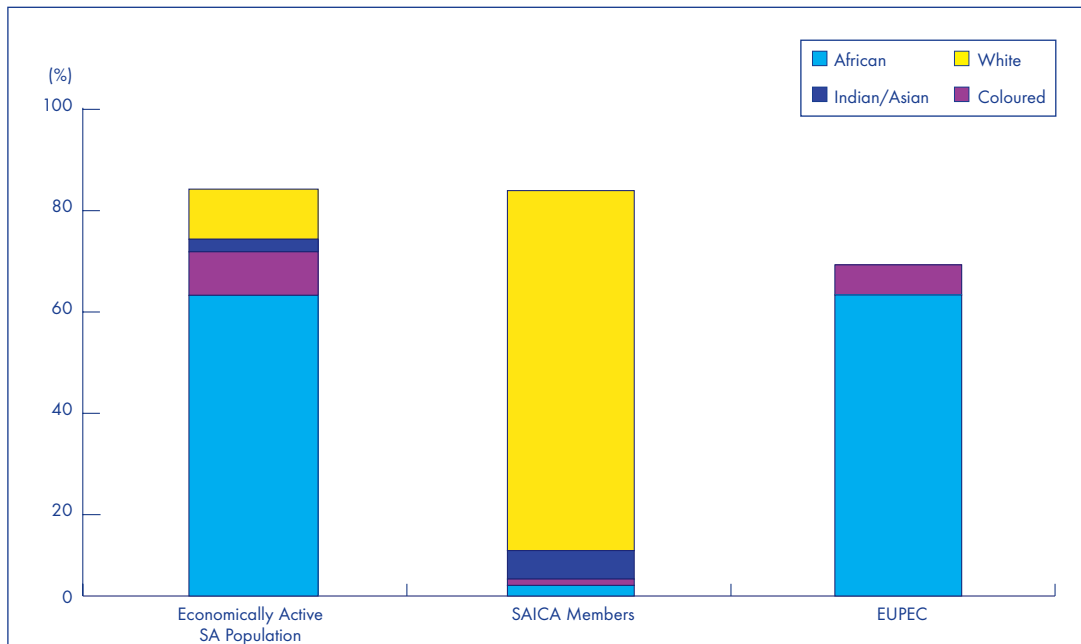
Figure SDP6 : Social Development Project Beneficiaries



* 50% of White beneficiaries are disabled and 50% are female

NSF-funded Education Upliftment Project

Figure NSF1 : Accounting Profession Transformation (as at 12/2004)



Note : The Education Upliftment Project embodies the potential for future transformation of the Accounting Profession

Figure NSF2 : Matric Maths and Accounting Pass Rate (as at 12/2002)

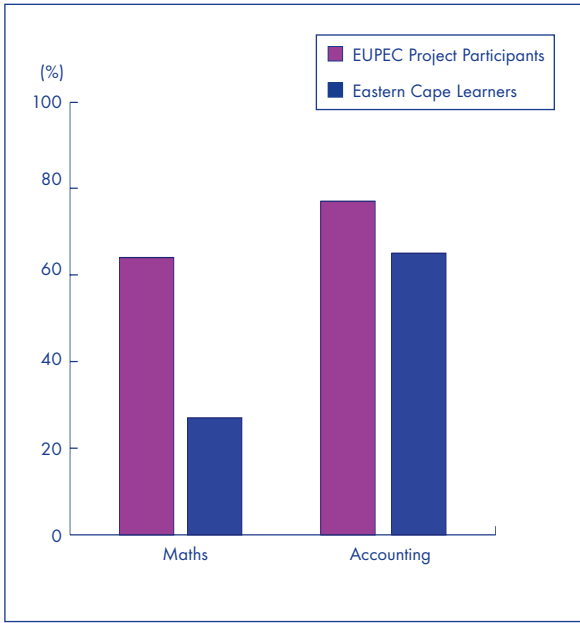


Figure NSF3 : EUPEC Project Participants : June Exam Average vs Final Grade 12 Average (as at 2/2002)

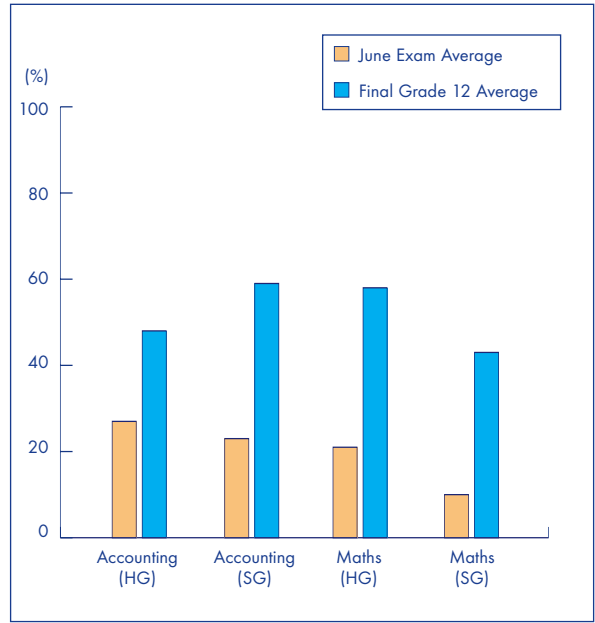


Figure NSF4 : Final Grade 12 Average (as at 12/2002)

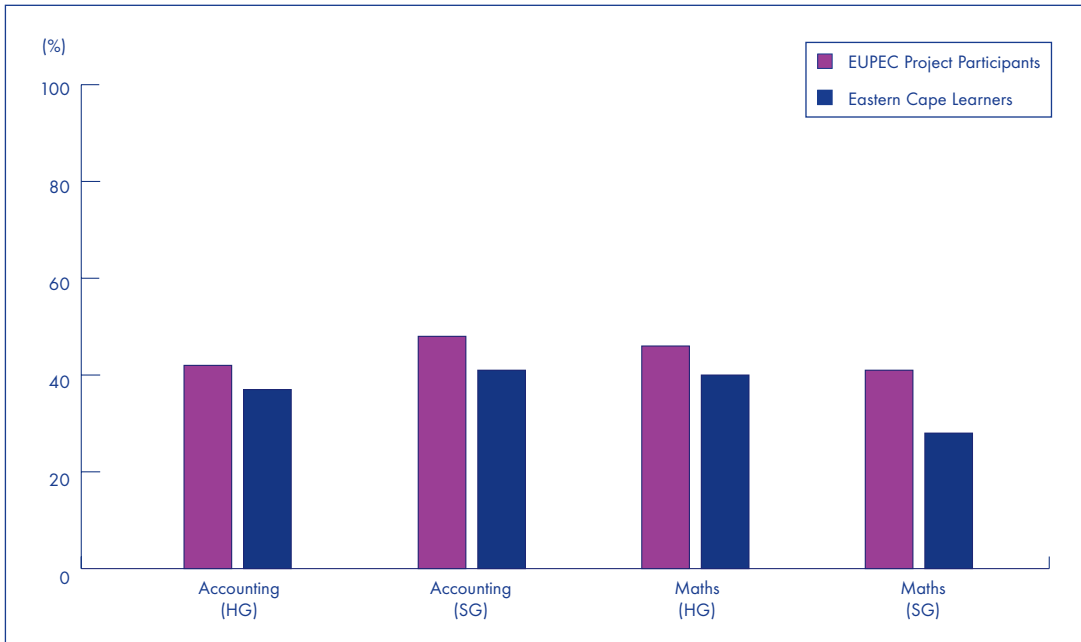
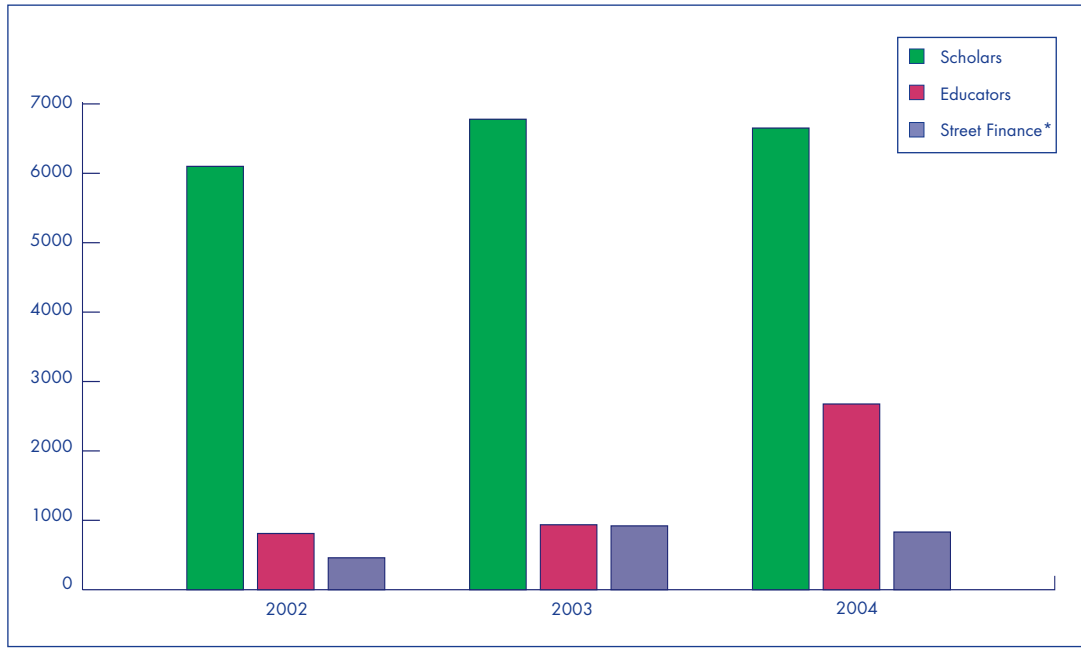
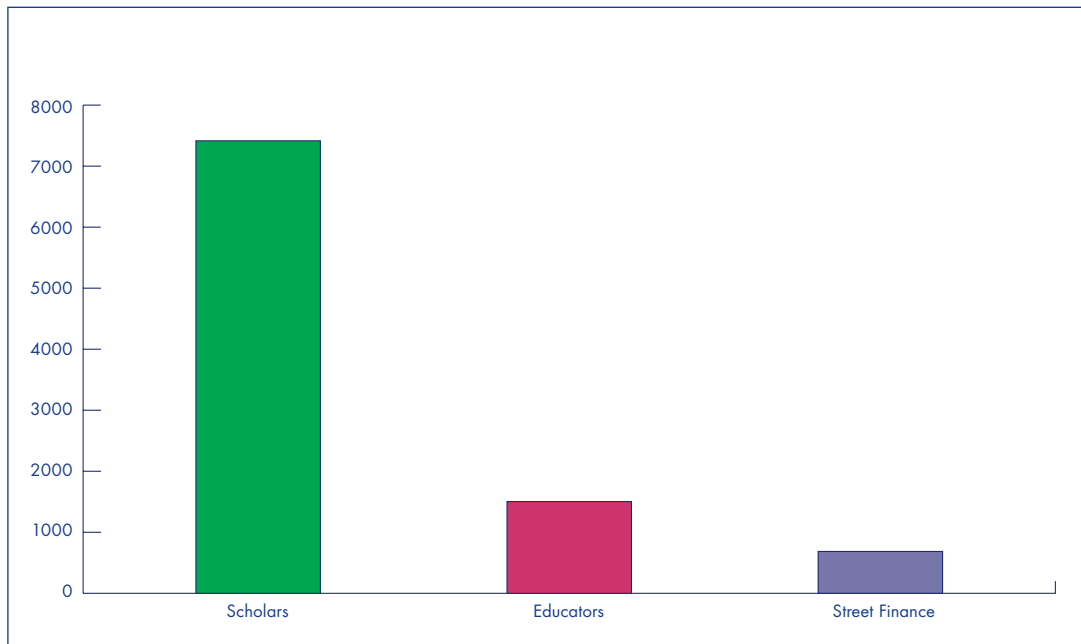


Figure NSF5 : EUPEC Participants (as at 12/2004)



*Street Finance is a Basic Finance Programme aimed at school principals and school governing bodies

Figure NSF6 : EUPLIM Participants (2004)*



* Project life : 2004-2006

Figure NSF7 : EUPLIM School Project (2004)

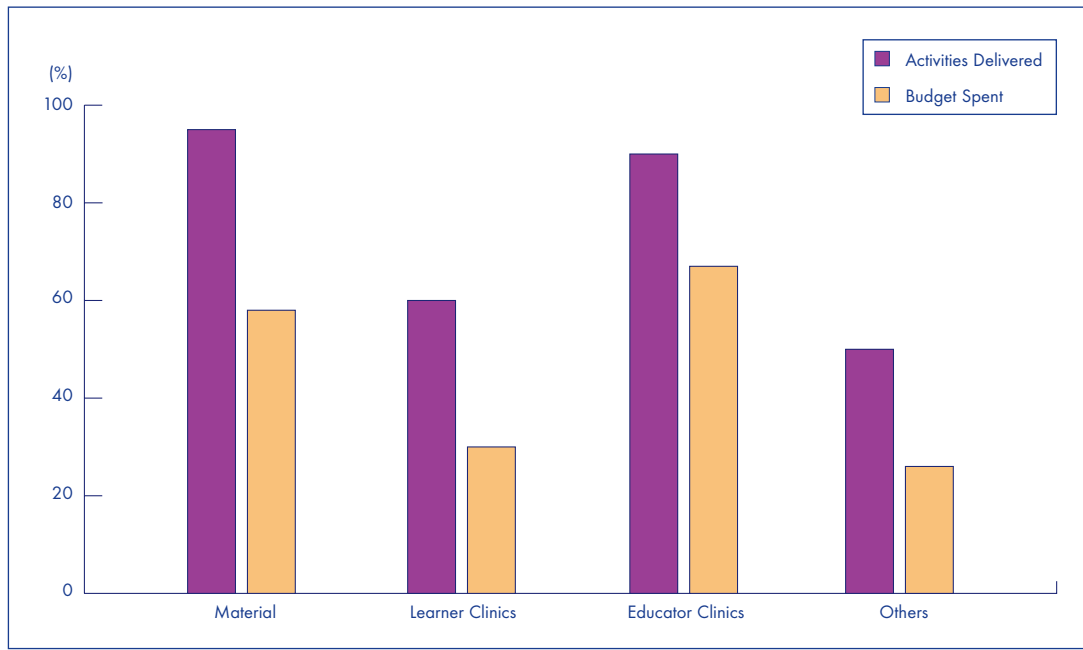


Figure NSF8 : EUPLIM University Project (2004)

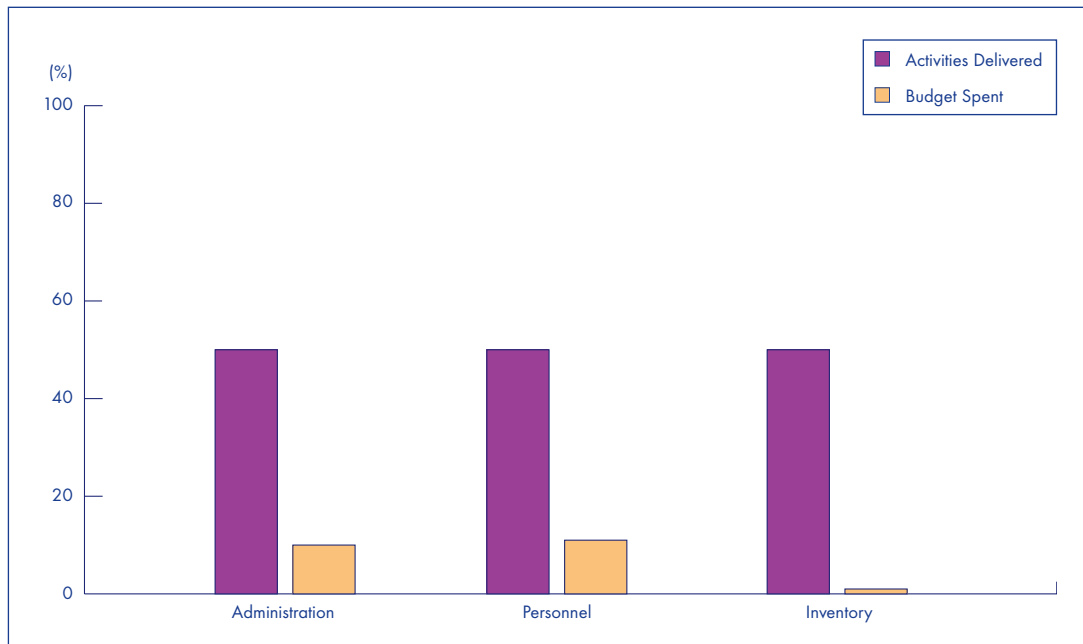
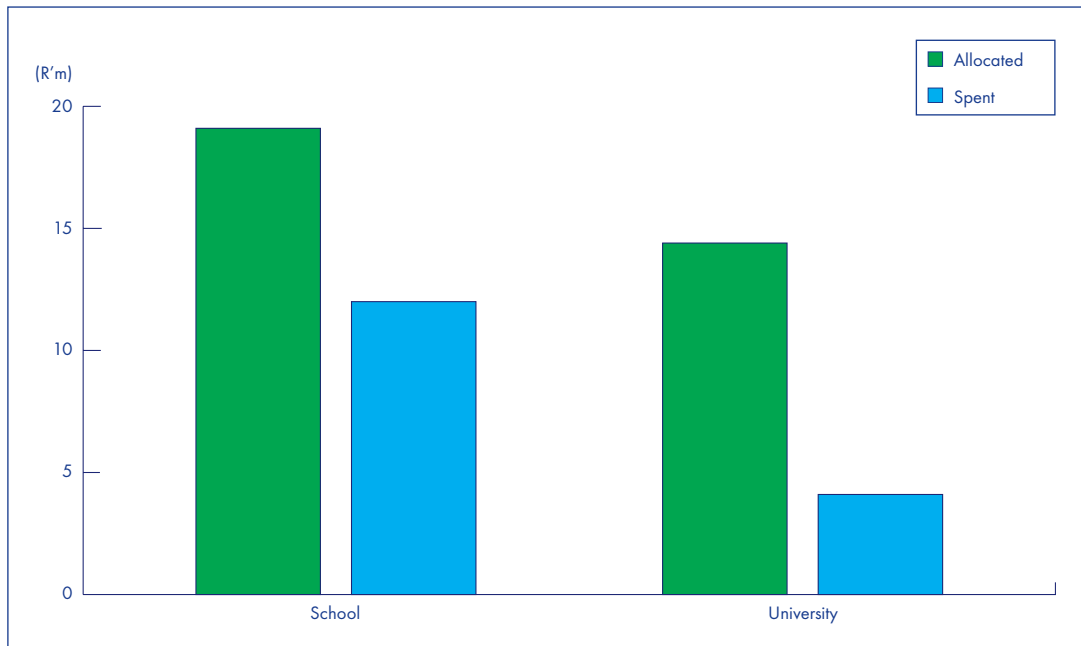
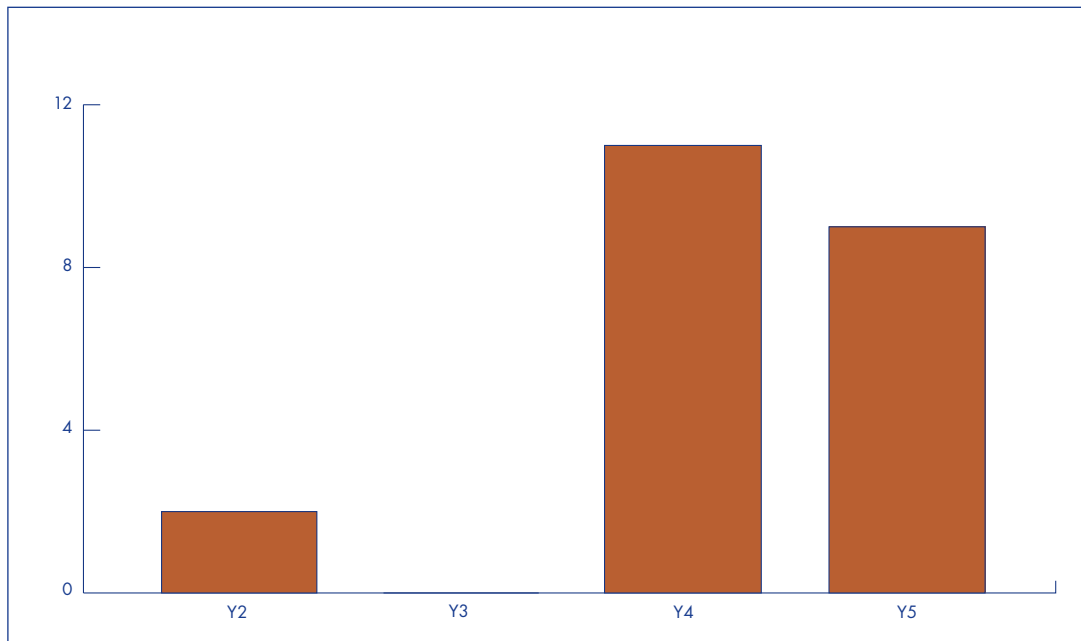


Figure NSF9 : EUPLIM Budget (to 12/2004)



Investors in People

Figure IIP1 : Organisations Committed to IIP



Note : Total to date = 22



INVESTOR IN PEOPLE



FASSET



labour

Department:
Labour
REPUBLIC OF SOUTH AFRICA

